

Product Name **GLYPHOSATE 41% SL** herbicides

CAS No. **1071-83-6**

Group Herbicides

Brief Description GLYPHOSATE 41% SL is a non-selective post emergence herbicide containing 41% w / w Isopropylamine salt of Glyphosate (N-Phosphonomethyl)

Detailed Description

Glyphosate 41% SL is generally used in TEA Plantation in India. However, It is also being used in other crops such as Soya bean, cotton, Coffee, Bananas, Fruits Garden, Mulberries Gardens and non Cultivated fields in accordance with the climatic condition and approvals of local authorities.

This Chemical is most effective to control following grasses-Axonopus compressus, Cynodon dactylon, Imoerata cylindrica, Polygonum perfoliatum, Kalm grass, Arundinella benghalensis, Paspalum scorbiculatum

Chemical Compisition:

Isopropyl amine salt of Glyphosate a.i	40.6% w/w
Inert Poly Oxyethelene amine surfactant	15.0 % w/w
Manufacturing Impurities	4.0 % w/w
Water	40.4% w/w
Total	100.0 % w/w

Recommended Doses /Hectare

2 to 3 ltr in 450 ltr water.

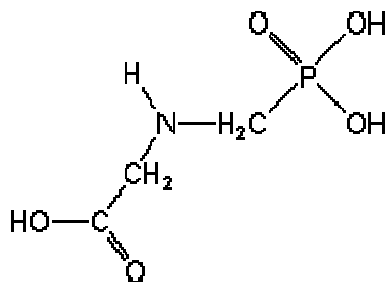
Packaging Details Glyphosate 41% SL is available in small pack from 250 ml , 500 ml, 1 ltr, 5 ltr upto Bulk packing as per customer requirement.

Delivery Time 30-45 DAYS

Empirical formula : C₃H₈NO₅P

Mol. Weight : 169.01

Structural formula:



Target Crop: It is used generally used in TEA Plantation in India. However, It is also being used in other crops such as Soya bean, cotton, Coffee, Bananas, Fruits Garden, Mulberries Gardens and non Cultivated fields etc..

Target Infestation: It is most effective to control following grasses-Axonopus compressus, Cynodon dactylon, Imoerata cylindrica, Polygonum perfoliatum, Kalm grass, Arundinella benghalensis, Paspalum scorbiculatum etc.