

Product Name PRETILACHLOR 50% EC Herbicides

CAS No. 51218-49-6

Group Herbicide

Brief Description PRETILACHLOR 50% EC is a Selective general herbicide used as pre-emergence herbicide in transplanted rice fields.

Detailed Description PRETILACHLOR 50% EC Pretilachlor is a selective systemic herbicide, absorbed primarily by the germinating shoots, and secondarily by the roots, with trans-location throughout the plant, giving higher concentrations in vegetative parts than in reproductive parts. Used pre-emergence for the control of annual grasses and certain broad-leaved weeds in Rice, both seeded and transplanted fields. It shows selectivity in barley, cotton, peanuts, sugar beet, wheat and several brassica crops. It is to be used in accordance with climatic condition and approval of local authorities.

CHEMICAL COMPOSITION

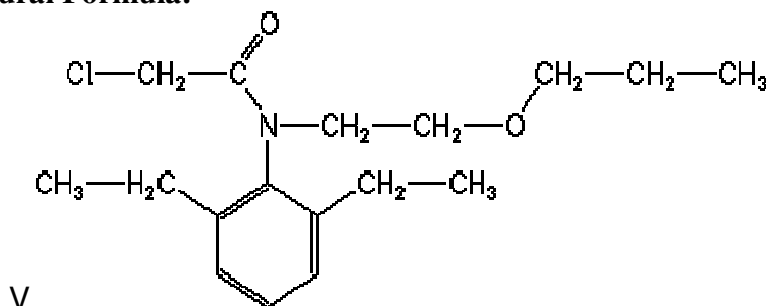
Pretilachlor Tech. a.i.	50.00 % w/w
Emulsifiers	11.00 % w/w
Solvent (Kerosene)	39.00 % w/w
Total	<u>100.00 % w/w</u>

Recommended dosages per hectare: @ 500 ml to 850 ml of a.i. or 750 ml to 1.25 lts of formulation in dilution with 500-600 lts. of water per hectare depending upon the crop and type of weed or as being recommended by the local authorities.

Packaging Details PRETILACHLOR 50% EC is available in 250 ml, 500 ml, 1 ltr packing and as per the requirement of customers.

Empirical Formula: $C_{17}H_{26}ClNO_2$ **Molecular Weight:** 311.9

Structural Formula:



Target Crop: It is used on crops like Paddy, both for seeded and transplanted fields. It is to be used in accordance with climatic condition and approval of local authorities.

Target Infestations: It is Selective herbicide used to control weeds in both seeded and transplanted rice fields. It is to be used in accordance with climatic condition and approval of local authorities.